



Office of the Council for the  
Ongoing Government of Tokelau  
Tokelau National Statistics Office

# Fuafakatatau o nā Hūiga ki nā Tau o Koloa ma Kaukaunaga a Tokelau

## Kuata o Māti, 2024

### Fakamatalaga kautū

Ko te fehuiakiga o tau ite kuata o Māti 2024

- Mō te tauhaga e 0.4 pahene
- Mō te mähina e 3.2 pahene.

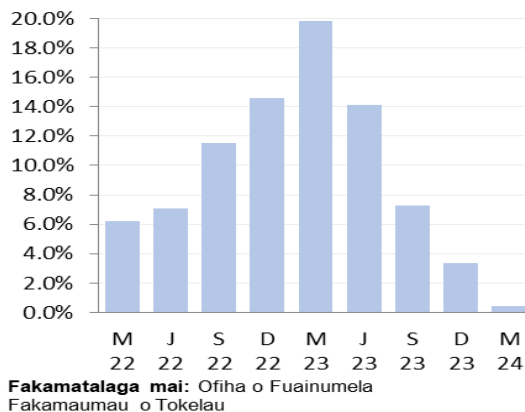
Ko te fuafakatatau o nā huiga ki na tau o koloa ma kaukaunaga a Tokelau (FTKK) e fua ai te hūiga o nā tau o nā koloa ma nā kaukaunaga e fakatau e nā kāiga tautokatahi i Tokelau. E fakamaopoopo e te Ofiha o Fuainumela Fakamaumau a Tokelau (TNSO) nā tau o nā koloa mai nā falekoloa vēnā ma nā falekoloa paaka (bulk store) i luga o nā fenua e tolu, fakatahi ai ma nā tau o nā koloa ma nā kaukaunaga mai nā mataeke e aofia ai te felakuakiga (transport), mālohiaga (energy), ma fehokotakiga (telecommunications).

### Hūiga mō te tauhaga

I te kuata o Māti 2024 fakatuhatuha kite kuata o Māti 2023 na hikitia ai te FTKK i he 0.4 pahene.

- Ko te kulupu o te ava mālohi ma te hikaleti na hikitia i he 7.1 pahene, na māfua ona ko nā:
  - Hikaleti- (Menthol) (hiki i he 15.8 pahene)
  - Hikaleti- (Filter) (hiki i he 4.3 pahene)
  - Pia- Fagu lahi (hiki i he 13.5 pahene).
- Ko te kulupu o meāfale, kope faigālua mō te fakaleleiga o kāiga na hikitia i he 7.3 pahene, na māfua ona ko nā:
  - Famalu (hiki i he 42.0 pahene)
  - Mā (hiki i he 35.4 pahene)
  - Fagu fufulu fale (hiki i he 46.6).
- Ko te kulupu o meakai ma vai-inu na pakū i he 3.9 pahene, na māfua ona ko nā:
  - Mamoe (Chops) (pakū i he 29.2 pahene)
  - Lolo tunu meakai (pakū i he 36.0 pahene)
  - Huka (pakū i he 26.2 pahene).

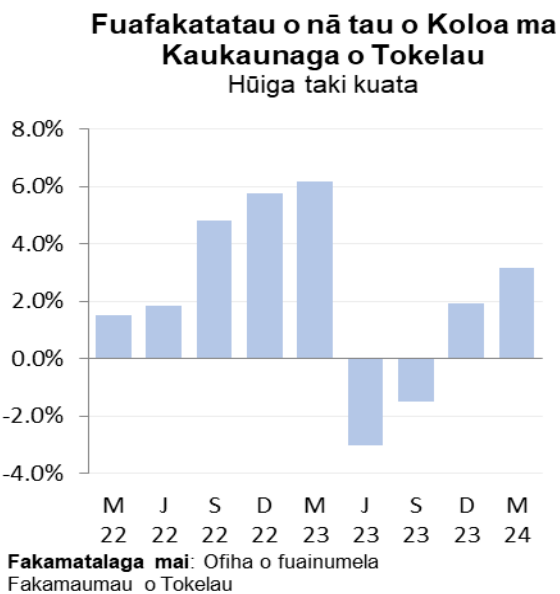
Fuafakatatau o nā tau o Koloa ma Kaukaunaga o Tokelau  
Hūiga taki tauhaga



### Hūiga mō te māhina

I te kuata o Māti 2024 fakatuhatuha kite kuata o Tehema 2023 na hikitia ai te FTKK i he 3.2 pahene

- Ko te kulupu o meakai ma vai-inu na hikitia i he 6.4 pahene, na māfua ona ko nā:
  - Mamoe (Chops) (hiki i he 89.8 pahene)
  - Moa (hiki i he 12.5 pahene)
  - Apa ika tuna (hiki i he 47.6 pahene).
  
- Ko te kulupu o ava mālohi ma te hikaleti na hikitia i he 5.4 pahene, na māfua ona ko nā:
  - Hikaleti –(Menthol) (hiki i he 8.1 pahene)
  - Hikaleti- (Filter) (hiki i he 3.9 pahene)
  - Pia- Fagu lahi (hiki i he 5.4 pahene)
  
- Ko te kulupu o meāfale, kope faigālua mā te fakaleleiga o kāiga na hikitia i he 10.0 pahene, na māfua ona ko nā:
  - Famalu (hiki i he 20.0 pahene)
  - Ogaumu kēhi (hiki i he 24.7 pahene)
  - Mā (hiki i he 44.4 pahene).



### Nā hao o te māhina o Māti 2024

E fa ia kulupu mai nā kulupu e iva na fakamaugia o lātou hao fakaopoopo kite FTCK mō te kuata, e lua na fakamaugia na fakailoga tōkehe, e fokotahi e heki iei he hūiga, kae ko ietahi e heki iei he āfainaga kite FTCK aofaki o te kuata tēnei.

E tuha e lua ia kulupu mai nā kulupu e iva na kitea to latou āgai ki luga o lātou hao kite FTT mō te tauhaga, e fa na fakailoga tōkehe, kae e fokotahi te kulupu e heki iei he hūiga, ma ietahi e heki iei he āfainaga na hao ai.

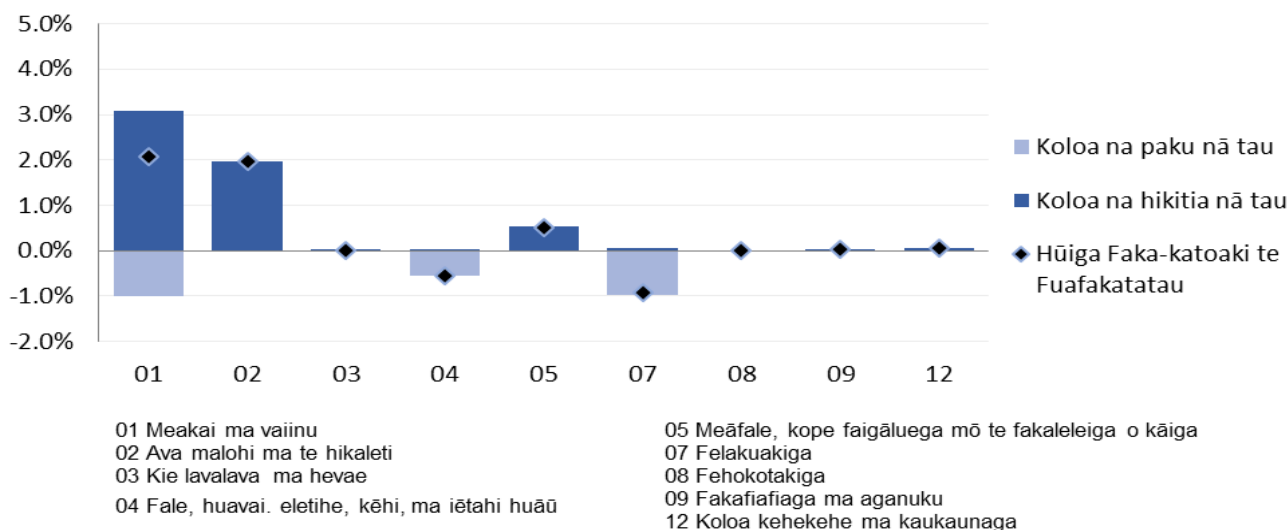
Kulupu	Pahene hao kite FTCK mō te kuata	Pahene hao kite FTCK mō te tauhaga
01. Meakai ma vai-inu	2.1%	-1.4%
02. Ava mālohi ma te hikaleti	2.0%	2.5%
03. Kie lavalava ma hēvae	0.0%	0.1%
04. Fale, huavai, eletihe, kēhi ma iētahi huāū	-0.6%	-0.5%
05. Meāfale, kope faigāluenga mō te fakaleleiga o kāiga	0.5%	0.4%
07. Felakuakiga	-0.9%	-0.5%
08. Fehokotakiga	0.0%	0.0%
09. Fakafiafiaga ma aganuku	0.0%	0.0%
12. Koloa kehekehe ma kaukaunaga	0.1%	-0.2%
<b>Kātoaga o te FTCK</b>	<b>3.2%</b>	<b>0.4%</b>

**Mātau:** E ono hē maua te aofakiga tonu o te FTCK i nā pahene iēnei ona ai ko te fakakātoatoaga o nā pahene ki he numela kātoatoa (rounding).

### Āfiaga o koloa na hikitia ma pakū nā tau

Ko te kalafa i lalo e fakaali ai nā āfainaga o nā koloa na hikitia ma na pakū nā tau. Ko te hūiga faka-katoa ko he 3.2 pahene na hikitia ai te FTCK mō te kuata o Māti 2024.

**Pahene o nā hao kite Fuafakatatau o nā tau o Koloa ma Kaukaunaga ina Kulupu ite kuata o Mati 2024**

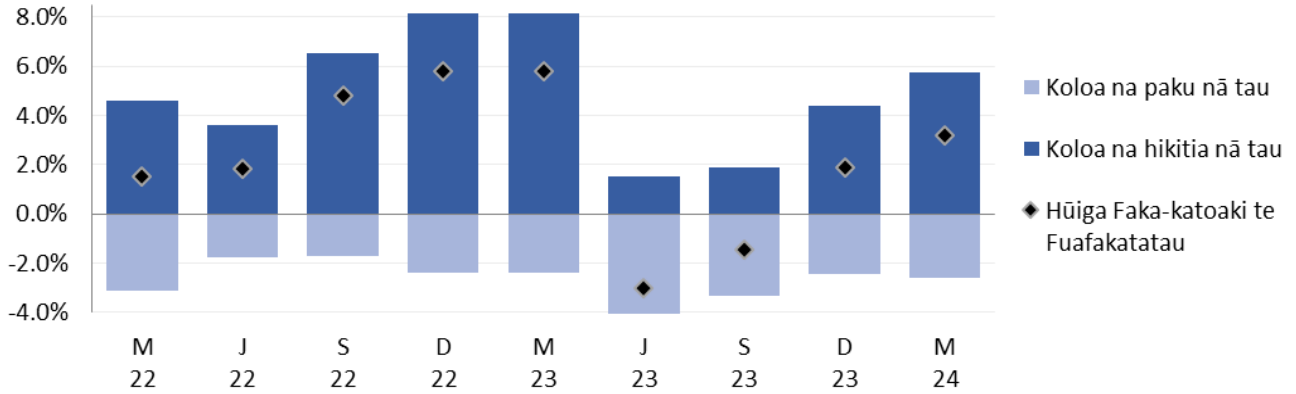


**Fakamatatalaga mai:** Ofiha o Fuainumela Fakamaumau o Tokelau

Ko te kalafa i lalo e fakahino mai ai nā āfainaga mai nā koloa na hikita nā tau i nā kulupu takitahi i te kuata tenei.

**Pahene o nā hao ko te Fuafakatatau o nā Koloa ma Kaukaunaga ihe Vaitaimi**

Hūiga taki kuata ki te kuata Māti 2024



**Fakamatalaga mai:** Ofiha o Fuainumela Fakamaumau o Tokelau

## Uiga o nā Kupu

### Fakamatalaga āgai kite Fuafakatatau o Tau o Koloa ma Kaukaunaga (FTKK)

Ko te FTKK e fua ai nā hūiga o nā tau o he kete e patino ai nā koloa ma nā kaukaunaga e fakatau e nā kāiga tautokatahi i Tokelau. Ko te fakavehegaga ma te tāua o nā itūkāiga koloa ma kaukaunaga i te kete tēnei mō te FTKK e tuku mai ai he ata faka-katoa o nā fakafanoga tupe fakafano a kāiga takitahi i Tokelau.

Ko te hini kautū o te FTKK ke fua ma fakamaumau nā hūiga o tau o ni koloa filifilia i ni fale koloa/fale faigālua i loto o he vaitaimi. Kāfai kua maitau kua iei ni hūiga āgai kite lahi pe ko te mamafa, vēnā ma te manaia pe ko te lelei o he koloa i te kete, e ono fai ai la ni gaoioiga ke mautinoa ai e hē āfaina lahi te hūiga o te tau o te koloa.

Na kamata nā lomiga o te FTKK a Tokelau ia Māti 2012, ma na toe fatu te fakavae (rebase) ia Hētema 2017. Ko te piliota fakahino kamata ko te kuata o Hētema 2017 (=100.0).

Ko te lihi o koloa ma kaukaunaga i loto o te kete koloa mō te FTKK ma nā fakamatalaga āgai kite metotia e fakaaogā kite fuafuaga o te FTKK e maua uma i te neti "Technical no tes: Consumer Price Index" (October 2017 version) [www.tokelau.org.nz/Stats.html](http://www.tokelau.org.nz/Stats.html).

### More definitions

**Tau fakahino (price index):** E fuafua ai te hūiga o nā tau mō koloa ma kaukaunaga i te vā o ni piliota. E fakaauiiili ki ei nā tau o koloa ma kaukaunaga maua mai i ni fale koloa kehekehe.

**Piliota fakahino (index reference):** Ko te piliota e fakamatea ai te fakatuhatuha o nā tau i nā piliota kehekehe. Fakatakitakiga, kāfai ko te numela fakahino mō he piliota e 115.0, ko tona uiga ko nā tau na hikitia i he 15.0 pahene mai te piliota fakahino.

**Hao hiki/hao pakū (upward/downward contributions):** Ko koloa e takutaku hō i tēnei fakamaumauga, ko koloa ia na lahi ho lātou hao kite aofaki o te FTKK. Ko te hao o he koloa e aofia ai tona mamafa i te fakahino (index) (ko tona tāua e fua mai i te lahi o tona hao kite vāega tupe fakafano a te kāiga ki koloa ma kaukaunaga) ma te lahi o nā hūiga kite tau. Kāfai e iei ni koloa e lua e tutuha to la pahene na hikitia ai i te tau, ko te koloa e mamafa tona FTKK e lahi atu ia tona hao kite aofaki o te FTKK. Ko tēnei hao e takua foki ko te pahene hao (index point).

### Piliota fakailoga (Reference period)

Ko tau o koloa mō te kuata o Māti 2024 na fakamaopopo mai te vā o te Aho 15 Fepuali ma te Aho 9 Apelila 2024 e nā kaufaigālua a nā kau tautua a nā nuku takitahi, fakatahi ai ma te kaufaigālua a te TNSO i Apia ma Tokelau.

## Tau afiaga (Price influencers)

E iei foki ni tahi māfua ga e ono māfua ai te hūiga ki nā tau o koloa. Ko ni tahi māfuaga iēnei na āfaina ai te FTKK mō te kuata o Hētema, vērā ma te tauhaga 2024 e aofia ai ona:

- E fakaaogā e Tokelau te tupe Niuhila, ko tona uiga e fuafua te lahi ma te mafai e Tokelau fakatau koloa i Hamoa kite mamafa o te tupe Niuhila fakatuha kite tupe Hamoa. E fuafua e te Mataeke of Tupe pe fia te fua mo te fehiuakiga o tupe i kamataga o māhina takitahi. Na mataugia te āgai ki lalo te tupe Niuhila fakatuha kite tupe Hamoa ite kuata tēnei, mai te NZD/SAT=1.68 ia Ianuali, NZD/SAT=1.67 ia Fepuali, ma Māti e NZD/SAT=1.67.
- Mai te tauhaga 2013 hove ko koloa uma e fakatau i Tokelau na kaumai mai Hamoa. Ko te lahiga o iēnei koloa ko ni koloa na toe fakatau atu ki atunuku i fafo, ma na fotu mai i ni tahi atunuku e aofia ai ia Haina, Auhetalia ma Niuhila. Ko tēnei vāega e tupu mai ai te fekehekehenakiga o tau o koloa i kuata takitahi, ma e mafai foki ke māfua mai i nā manakoga o te atunuku, kae vērā foki fakavāomalo, te maua o koloa, vērā fokite fuafuaga o tupe hui. E lahi he āfainaga kite FTKK a Tokelau kāfai kua iei ni hūiga ki nā tau, vērā ma te maua pe he maua o koloa i Hamoa.
- E fuafua lava e te nuku nā tau o ana koloa e fakatau (fakatakitakiga ko te hikaleti, te ava malohi ma na vai-inu), ma e ono tahuhihi.
- I te Fono Fakamua ia Iulai 2017 na talia ai ke fai he lāfoga (tax) e 325 pahene mō nā hikaleti i te manatu lava ke tipitipi ki lalo te tagohia o te hikaleti, ma vērā ai foki ona fehoahoani kite fakaitiitiga o nā fāmai he pēhi. Talu mai ai nei, e fai lava ma hikihiki nā tau o nā hikaleti e nā Taupulega takitahi. Ona ai ko te tūlaga o te mamafa o te hikaleti i te FTKK, ko hō he hūiga i to lātou tau e āfaina lahi ma lahi ai te hūiga kite aofaki o te FTKK e ve ona iloa mai te 2017. I te tau tukutonuga lava o te hē paleni lahi ona ai ko nā pōlihi o tau o te hikaleti, fakatahi ai ma te heahea maua pe hapalai te hikaleti i nā koloa, e fua fakalua te FTKK. E fua muamua ke aofia nā hikaleti, ma toe fua ai kae he aofia ai nā hikaleti. E fakāfai gofie ai ma holotonu ai kite “Tobacco free Tokelau 2020”, ma vērā ai ona hē toe kaumai ai te hikaleti e nā koloa ki Tokelau.

## Lavelaveaga

Na fai tēnei lōmiga ma te maeaea lelei i te fatuga, te iloiloga ma te tuhiga o nā fakamatalaga. E he mautinoa e te TNSO e matuai hēai he pahala i tēnei lōmiga. E fakamalie atu ai e hē ono lavelavea tēnei mataeke kāfai kua pahala atu i tēnei lōmiga.

## Taimi

Ko nā lōmiga iēnei e fakahalalau i te initaneti e he tahi mataeke, ma e hē i lalo o te kikilaga a te TNSO. E hē pakū la kite TNSO kāfai kua tuai te fakahalalau atuga o iēnei lōmiga.

[fakaikuga]